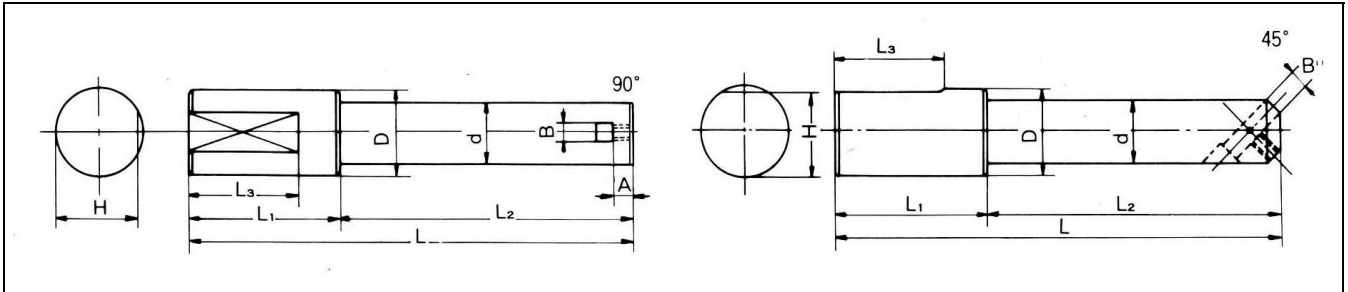


S軸ボーリングバー

低コスト、時間短縮、高精度！



呼び	D	d	A	B		L	L1	L2	L3	H
			(90°のみ)	90°	45°					
ST25 - 15 -90° (45°)	25	15	8	6	5	220	70	53	23	
- 16 -90° (45°)		16			6					
- 18 -90° (45°)		18	8	8						
- 20 -90° (45°)		20								
- 22 -90° (45°)		22	15	10	8					
- 24 -90° (45°)		24								
- 25 -90° (45°)		25								
ST32 - 15 -90° (45°)	32	15	8	6	5	230	80	63	30	
- 16 -90° (45°)		16			6					
- 18 -90° (45°)		18	10	8	8					
- 20 -90° (45°)		20								
- 22 -90° (45°)		22	15	10	8					
- 24 -90° (45°)		24								
- 25 -90° (45°)		25								
- 28 -90° (45°)		28								
- 30 -90° (45°)		30								
- 32 -90° (45°)		32	13	10	8					
- 35 -90° (45°)		35								
ST42 - 28 -90° (45°)	28									
- 30 -90° (45°)	30	42	20	13	280	200	40			
- 32 -90° (45°)	32									
- 35 -90° (45°)	35									
- 40 -90° (45°)	40									